

ASCENT CAPTURE 5

The Operating System of Capture

THE SOLUTION FOR ALL YOUR CAPTURE NEEDS

With enhanced enterprise capabilities and expanded import and export features, Ascent Capture 5 is the ideal solution for the most complex, highest volume document and content systems. Imagine importing all your incoming content with the same powerful application, whether it's in scanned documents, e-mail, or word processing files. Imagine moving paper documents from your remote offices to your central workflow system without actually shipping paper anywhere. Imagine being able to index your content from down the hall or from halfway around the world – anywhere you have a Web browser. Imagine Ascent Capture 5.

CAPTURE DOCUMENTS, DATA, AND MORE

Ascent Capture 5 delivers powerful, production-level document and data capture. In document capture, scanned images are stored for later retrieval, so you need efficient scanning, accurate image cleanup, and automated indexing. In data capture, images are frequently discarded and only the extracted data is kept, so you need versatile and accurate recognition (OCR for machine print, ICR for handwriting, OMR for check marks, and bar codes).

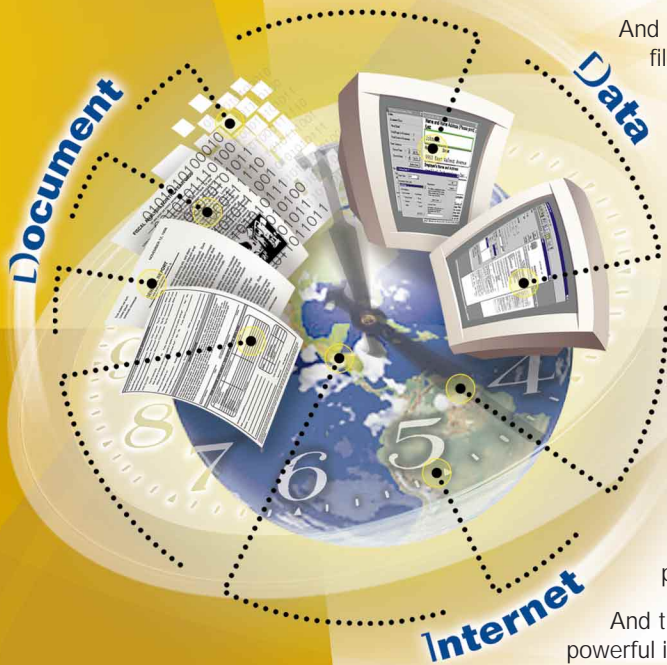
Whichever you need, Ascent Capture has you covered. It boasts the fastest, most flexible scanning and indexing around, and also performs ICR, automatic form ID, highly accurate zonal OCR, and easy-to-implement OMR that can extract even the toughest data from scanned images without missing a beat.

And now, Ascent Capture 5 enables you to move e-mail, word processing files, photos, Web forms, XML streams or other e-content through the same powerful indexing and validation process. That means your workflow or content-management system gets consistently indexed content – no matter what the source – and your enterprise gets reliable, easy and fast retrieval of all your information. If your business is moving from paper-based to digital systems, Ascent Capture 5 can help smooth the way.

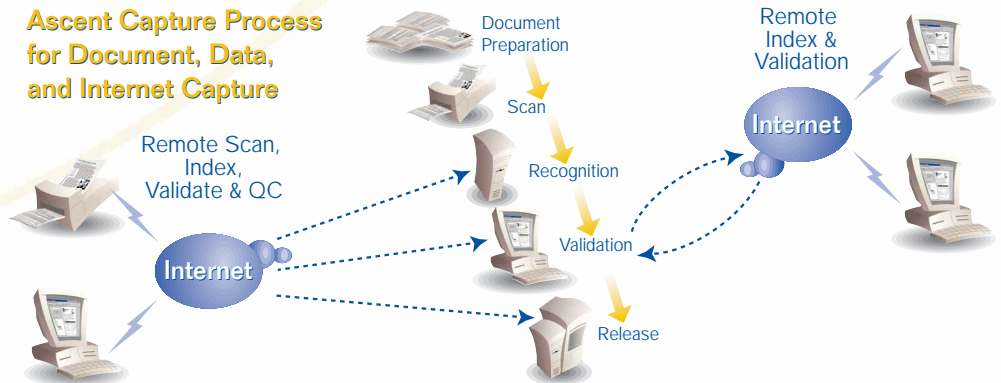
CAPTURE AND INDEX ANYWHERE

Before Ascent Capture, most organizations with remote offices were forced to either ship their paper documents to a central site for scanning, scan the documents to CD, or send low quality faxes. With the Ascent Capture Internet Server module, your remote offices can scan their documents – and even index and validate them – directly into the central Ascent Capture process for release into your back-end enterprise system. You save the costs of shipping and photocopying, benefit from better security and document quality, get faster access to your content, and accelerate your business processes.

And the Web Validation Server module now lets you distribute Ascent Capture's powerful indexing and validation capabilities where you need them. Indexing can be performed by part-time workers at home or by subject-matter experts in their offices or in other time zones, because the Web Validation Server requires only an Internet connection and a standard Web browser.



Ascent Capture Process for Document, Data, and Internet Capture



KOFAX

www.kofax.com

CUSTOMIZABLE TO MEET YOUR NEEDS

With Ascent Capture 5, it's easier than ever to create a highly integrated content solution for your enterprise:

- **XML Backbone™.**

Ascent Capture includes seven standard processing steps, including scanning, recognition, and validation.

The XML Backbone that connects these steps gives you the power to write your own custom modules that easily link into Ascent Capture via XML.



- **Import Controller.** The new Import Controller lets you create front-end scripts to link Ascent Capture with enterprise applications such as financials, human resources, manufacturing, and management decision support. And Ascent Capture 5 comes packaged with an XML auto-import controller.
- **Ascent Capture COM Interface.** The built-in COM interface enables you to modify the Ascent Capture user interface via Visual Basic, Visual C++, or any language that supports COM.
- **Database Lookup Interface.** This new interface lets you set up sophisticated database lookups without scripting.
- **Export.** Ascent Capture exports content and data to workflow and content management systems via release scripts written in Visual Basic. You can choose from dozens of release scripts available from Kofax, or you can use our source code to write your own. And Ascent Capture 5 lets you release to multiple systems at the same time.

EASY TO USE, EASY TO INSTALL

The Ascent Capture 5 user interface maintains its acknowledged reputation for operator ease of use and fast, simple installation. Ascent Capture can be up and running in hours, rather than days or weeks of expensive installation and configuration – and when the job changes, Ascent Capture's point-and-click batch editing makes batch class setup a breeze.

SCALABLE TO GROW WITH YOUR ENTERPRISE

Scanning a few hundred pages a day? No problem. We have low-cost, stand-alone configurations that provide all the functionality you need.

Scanning a million pages a day? Still no problem. A networked installation of Ascent Capture can be easily expanded by simply adding more scanning, recognition, validation, or release stations. And the Ascent Capture Internet Server and Web Validation Server let you expand even further by installing remote scanning and indexing stations anywhere around the world, all linked to your central site via the Internet or your corporate network.

SUPPORTS COLOR SCANNING

Ascent Capture 5 adds color image processing and advanced thresholding to improve image quality and OCR accuracy for color documents. Ascent Capture 5 uses advanced algorithms developed by Kofax to handle full-color deskew, and state-of-the-art color-to-bitonal thresholding. Ascent Capture can now automatically recognize color images, extract data from them and release them to your back-end system.

ENABLES WEB PUBLISHING

As organizations leverage the Internet as well as intranets and extranets to improve their competitiveness, Ascent Capture can be an integral part of the process of transforming paper-based information into electronic data. Ascent Capture's built-in PDF support allows users to quickly and easily publish paper-based content to the Web. Ascent Capture supports output of normal PDF, image-only PDF, and image plus hidden text PDF.

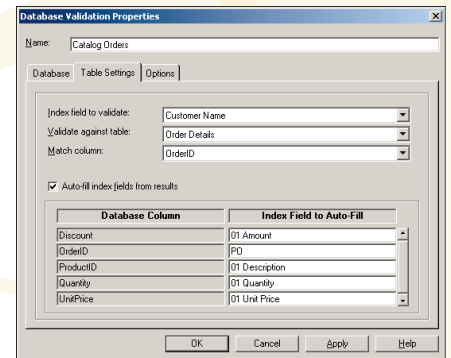
DESIGNED FOR ANY INDUSTRY

We've sold over 16,000 licenses of Ascent Capture into industries as diverse as state and local government, manufacturing, transportation, financial services, insurance, healthcare, accounting, legal, and many others. No matter what industry you're in, Ascent Capture speaks your language.

INTEGRATES WITH WORKFLOW AND CONTENT MANAGEMENT APPLICATIONS

Ascent Capture can export to any ODBC-compatible database or to a delimited ASCII file. In addition, standard release scripts seamlessly connect Ascent Capture to systems from FileNET, IBM, Keyfile, Eastman Software, Documentum, IMR, PC DOCS, Open Text, LiveFile, Optika, Excalibur, Lucent, and many others. This flexibility makes Ascent Capture the perfect front end for any system.

A new user interface in Ascent Capture 5 enables you to set up sophisticated database lookups without custom scripting.



FOR MORE INFORMATION

Just visit the Kofax web site at www.kofax.com to learn more. You'll find white papers, success stories, and partner integration information. Or send e-mail to info@kofax.com to get in touch with one of the hundreds of Ascent Resellers worldwide who are ready to help you integrate Ascent Capture 5 into your business today.



KOFAX

www.kofax.com

KOFAX IMAGE PRODUCTS • 16245 Laguna Canyon Road • Irvine, CA 92618-3603 • U.S.A.
Phone: 949-727-1733 • Fax: 949-727-3144 • E-mail: info@kofax.com

KOFAX EUROPEAN OFFICE • Heide 17 • B - 1780 Wemmel / Brussels • Belgium
Phone: +32-2-456-17-20 • Fax: +32-2-456-17-21

Copyright © 2001 by Kofax Image Products. All rights reserved. Kofax and Ascent are registered trademarks of Kofax Image Products. All other product names and logos are trade and service marks of their respective companies. All specifications subject to change without notice. Printed in the U.S.A.